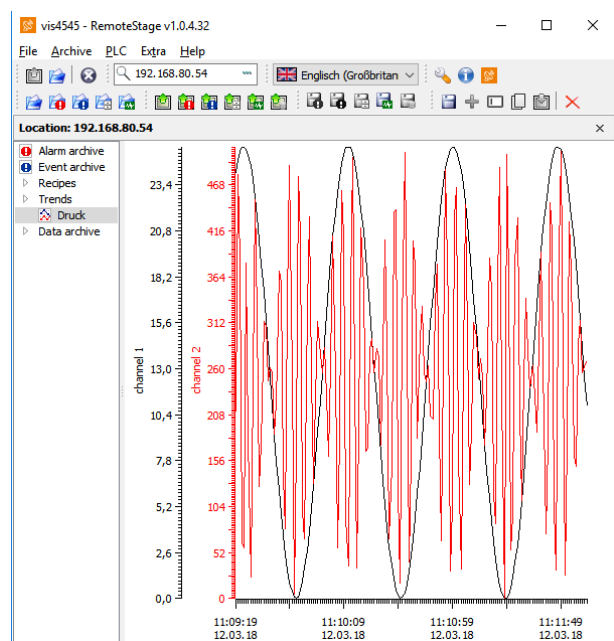
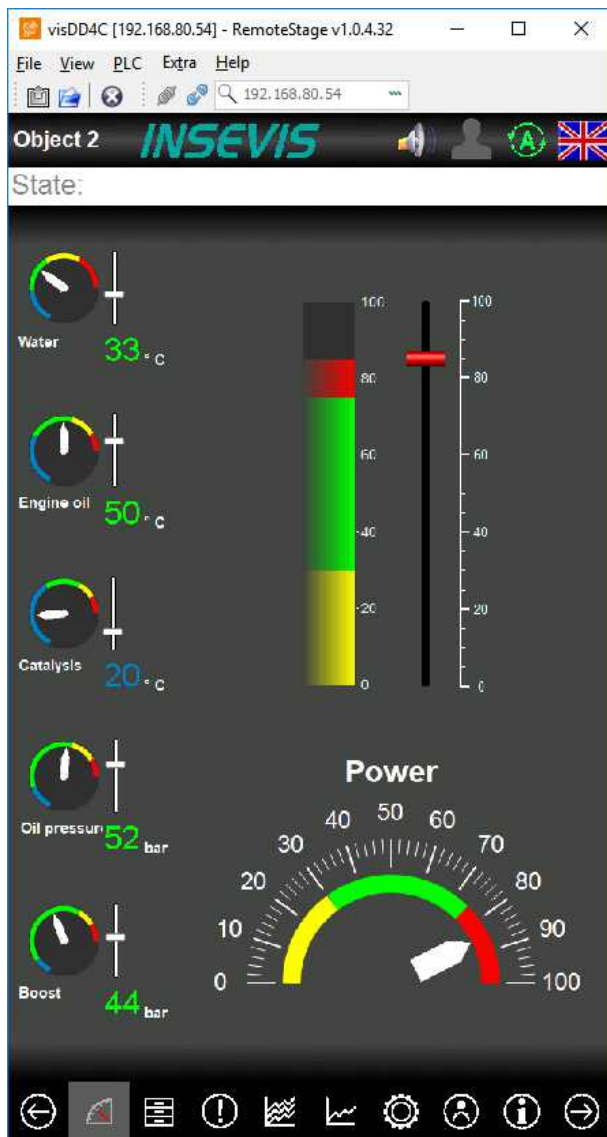


Product information

Remote access software

RemoteStage



The screenshot shows the 'Export trend archive' dialog box in RemoteStage. It prompts the user to 'Select the text delimiter and separator characters'. The 'Field delimiters' section has radio buttons for Semicolon, Tab, Comma, and Space. The 'Text separator' section has radio buttons for '{ }' and '()'. A preview window shows the following text:

```
//Trend ID number: 6163
//Channels: 2
//Interval: 1
//Samples: 3313
//No.:Date;Time; channel 1; channel 2
"1";12.03.2018;11:09:19;24,1;212"
"2";12.03.2018;11:09:20;24,8;480"
"3";12.03.2018;11:09:21;25,3;384"
"4";12.03.2018;11:09:22;25,5;63"
"5";12.03.2018;11:09:23;25,6;58"
"6";12.03.2018;11:09:24;25,4;380"
"7";12.03.2018;11:09:25;25,1;180"
"8";12.03.2018;11:09:26;24,5;25"
"9";12.03.2018;11:09:27;23,7;250"
"10";12.03.2018;11:09:28;22,7;451"
"11";12.03.2018;11:09:29;21,6;320"
"12";12.03.2018;11:09:30;20,3;127"
"13";12.03.2018;11:09:31;18,9;175"
"14";12.03.2018;11:09:32;17,4;314"
```

Buttons for 'Ok' and 'Cancel' are visible at the bottom right.

(valid from 02/2014)

Changes to older versions of this document

- Changed in Rev. 1:** complete new document from RS 1.0.4.4
- Changed in Rev. 2:** new design line
- Changed in Rev. 3:** adapted to newest software release and manual revision
- Changed in Rev. 4:** new screenshots

General features of RemoteStage

Freeware / Portable



With the free-of-charge software „RemoteStage“ there can be made a remote visualization from the binary of a VisuStage-visualization created before. This program is a portable solution but with lots of functions. It communicates via TCP/IP with the Panel-PLC or Panel-HMI and can import the necessary binary from there as well. By using this binary format no one can read back the source code of your visualization

Multiple RemoteStages can be operated in one PC to get a kind of master display with multiple remote screens. It is possible to download the visualization binary directly by Ethernet from the Panel-PLC / Panel-HMI (See right button). This helps to reduce the organization effort by far. In VisuStage you may assign a PIN-code to protect your visualization against unauthorized uploads.

The RemoteStage works **like an additional Panel-HMI** on the remote-PC, what gets the process (actual) data by a TCP/IP-connection straight from the PLC. System data like Time and Buzzer are related to even this PC of course. This allows a remote visualization and account to external S7-PLCs as well. This is a function nearly similar to WinCC runtime of a remote PC). In Panel-PLCs and Panel-HMIs with CPU-T a VNC-Server is integrated what allows 1:1 controlling by another PC-monitor or mobile device with a VNC-Client (-Reader) onboard. Therefore no RemoteStage is necessary any more, for settings read more in the manual.

RemoteStage – Visualization mode

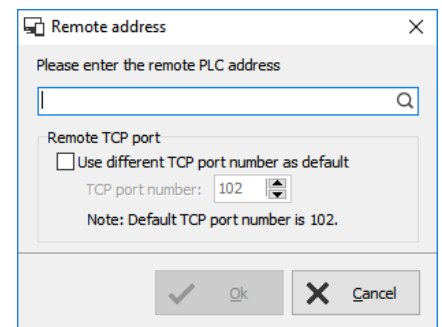
Freeware / Portable

Selection of the remote-device

With opening of the visualization binary („visualization“.vsbin) the IP-address of the remote PLC will be required (Fig.).

(By using the function „accessible devices“ - loupe- you can select one of these directly or type in the IP-address manually.)

This address will be linked with this binary. So it is not necessary to re-type it again.



Using and setting up the remote screen

The PopUp-menus are self explaining. The actual remote state is shown on the bottom of the screen.

- Yellow:** connecting (set up connection)
- Green:** connected (online) and PLC in RUN
- Red:** connected (online) and PLC in STOP

The switching between online/offline can be done by the green button beside the IP-address line or by the menu „PLC“.

Hint: Referring the system data (like buzzer, archives and time) always the PC-system data will be used, not these of the remote device.

RemoteStage – Archive mode

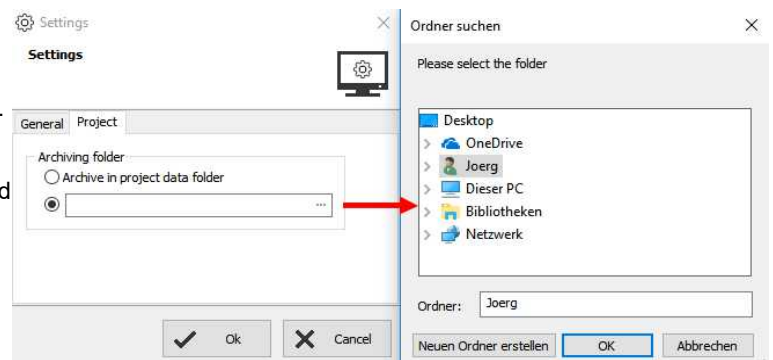
Freeware / Portable

Storing the remote (on the PC) archived data

The archive data, logged during the remote session on the PC, will be stored on the working place in the remote-PC **only**. (not depending from the archive in the PLC in the Micro-SD-card during the same time).

Note: there are 2 archives of each item. If you want to archive a remote-trend, you need to start this trend in the remote visualization.

- At the menu „Settings“ will be set up, if these date will be stored
- in the project folder (where the visu binary is kept) or
 - at another path.



In the newly appeared PC-window you may find different groups of icons with different functions:



Reads archive by inserting Micro-SD-card in PC slot from left → right:

- Data(DB-)archive*
- Alarm archive*
- Event archive*
- Trend archive*

Read in archives by Ethernet directly into PC from left → right:

- All archives
- Alarm archive
- Event archive
- Recipe archive
- Trend archive
- Data(DB-)archive

Exports archive data to PC into the PC-network from left → right:

- Alarm archive
- Event archive
- Recipe archive
- Trend archive
- Data(DB-)archive

Editing and downloading of modified archives from left → right:

- Save archive
- Add new archive
- Rename archive
- Copy archive
- Download archive

* To open these files insert a nearly valid IP-address and open the binary of the visualization what fits to your project. Than the binaries can be converted into csv-files

Trend archive viewer and csv-export

Archive data can be read in from Micro-SD-card, displayed on the PC-monitor and exported as csv-file.

Above figure displays all archived trend with name „Druck“ of the Panel-PLC / Panel-HMI with the IP-address 192.168.80.30. The time will be displayed in the Language format you assigned on your PC (here in German = DE)



Recipe display and export

Recipe archive data from Micro-SD-card can be read in, displayed and saved to PC as scv-file.

below: list of archived recipes and its records

Record...	Created on	Modified on	Size
TEST3	04.01.2019 ...	04.01.2019 ...	25
TEST2	04.01.2019 ...	04.01.2019 ...	25
TEST1	04.01.2019 ...	04.01.2019 ...	25

below: list of records and its elements

Element name	Element value
1 Wasser (l)	0.4
2 Pulver weiss	80
3 Pulver gelb	1
4 Pulver rot	15
5 Pulver schwarz	2

The export as csv-file is like the export at message archives. Pay attention to format the csv-file according to your own needs.

Command line for RemoteStage (for details reads the manual please!)

RemoteStage can be used in batch process from command line with command line parameters, to save archives somewhere with a self defined name.

Automatic export of messages- (alarms and events) and trend archives

The binaries of the messages and trends (assigned in the VisuStage before and created at runtime) will be read in, converted and stored in a path on the PC.

```
remotestage.exe /mode=<mode> /r=<remote> /o=<output file>
/v=<project binary> /t=<trend number>
```

For example to read in alarm archive from INSEVIS PLC with IP address 192.168.80.50 and write to „d:\archive\alarm.csv“ file with CSV format. You can execute from command

```
C:\>remotestage.exe /mode=alarm_archive /r=192.168.80.50
/o=D:\archive\alarm.csv /v=D:\visu\myvisu.vsbin
```

Automatic export of receipes

The binaries of the (in VisuStage predefined) recipes and the of the records (created in runtime by the operator or by SFC206 from the S7-program) will be read in, converted and stored in a path on the PC.

```
remotestage.exe /mode=recipe /r=<remote> /v=<project binary> /recipe=<recipe name>
/record=<record name> /o=<output file> /format=csv
```

To read in e.g. a single recipe record „Orange“ from the recipe „Rezeptur_Rot“ from the INSEVIS Panel-PLC with the IP-address 192.168.80.50 and to store it as csv-file to „D:\archive\“ this command line is required:

```
C:\>remotestage.exe /mode=recipe /r=192.168.80.50 /v=d:\visu\myvisu.vsbin
/recipe=Rezeptur_Rot /record=Orange /o=D:\archive\Orange.csv
```

To read in e.g. ALL recipe records from the recipe „Rezeptur_Rot“ from the INSEVIS Panel-PLC with the IP-address 192.168.80.50 and to store it as csv-file to „D:\archive\“ this command line is required:

```
C:\>remotestage.exe /mode=recipe /r=192.168.80.50 /v=d:\visu\myvisu.vsbin
/recipe=Rezeptur_Rot /o=D:\archive /format=csv
```

Automatic export of data (DB-) archives

This function copies the data(DB-) archives created by S7-program with SFC207to the requested target path into the PC. A modification of the csv-format is not possible.

```
remotestage.exe /mode=data_archive /r=<remote>
/archive=<archive file> /o=<output file>
```

To read in e.g. a data (DB-) archive „Test-DB“ from the INSEVIS Panel-PLC with the IP-address 192.168.80.50 and to store it as csv-file to „D:\archive\Testdaten.csv“ this command line is required:

```
C:\>remotestage.exe /mode=data_archive /r=192.168.80.50
/archive=Test-DB /o=D:\archive\Testdaten.csv
```

Copyright

This and all other documentation and software, supplied or hosted on INSEVIS web sites to download are copyrighted. Any duplicating of these data in any way without express approval by INSEVIS GmbH is not permitted.

All property and copy rights of theses documentation and software and every copy of it are reserved to INSEVIS GmbH.

Trade Marks

INSEVIS refers that all trade marks of particular companies used in own documentation are reserved trade marks are property of the particular owners and are subjected to common protection of trade marks.

Disclaimer

All technical details in this documentation were created by INSEVIS with highest diligence. Anyhow mistakes could not be excluded, so no responsibility is taken by INSEVIS for the complete correctness of this information. This documentation will reviewed regularly and necessary corrections will be done in next version.

With publication of this catalog all other versions are no longer valid.